

[www.alfer.com](http://www.alfer.com)

**alfer**<sup>®</sup>  
aluminium

# **combitech**<sup>®</sup> system connect 23.5 mm



## Overview

<b>alfer® combitech®</b> system · connect 23.5 mm	3
Good reasons to choose <b>combitech®</b> -connect	4
How it works	5
An overview of connect connectors	6
Aluminium and plastic system profiles	7
System accessories	8
Ideas and possibilities	9
<b>combitech®</b> round	10
An overview of round connectors	12
Aluminium profiles and accessories	13
Notes – product ranges	14
Useful application videos	14
Notes – technical diagrams	15
<b>alfer®</b> hardware range	16
<b>alfer®</b> building material range	17
<b>alfer®</b> storage system range	18



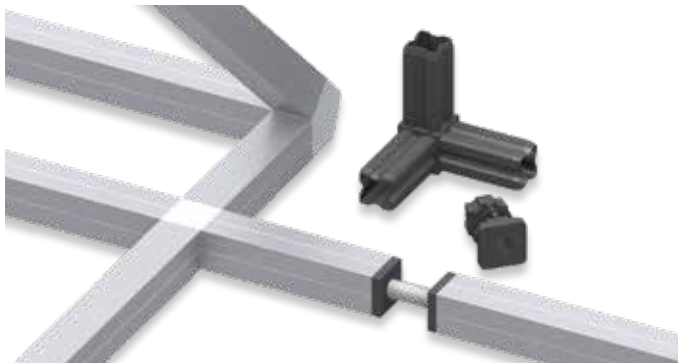
**Dear customers,**

Another cornerstone of our **combitech**<sup>®</sup> system are the 23.5 mm connect connectors. These connectors can be used to join square tubes with one another. Many units can thus be made such as frames, shelves, tables, pet hutches, goal sets, trestles, magazine racks, etc.

Building using **combitech**<sup>®</sup> connect is child's play and enables you to create endless designs.

The range includes many different aluminium and plastic profiles as well as the appropriate connect connectors in the 23.5 mm series. 45 degree connect connectors, which can be used to quickly and easily build small roof structures, are now also available. Practical articulated connectors even make it possible to create angled designs.

## Good reasons to choose **combitech**<sup>®</sup> connect

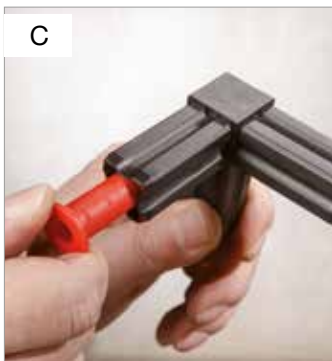
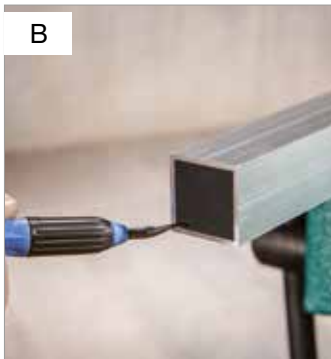
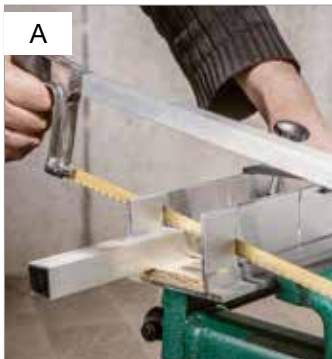


**combitech**<sup>®</sup> connect connectors can be used with all square tubes and special profiles in the 23.5 mm series. They are available in black or white and go perfectly with the uncoated aluminium, silver anodised aluminium, white, powder-coated aluminium and white plastic **combitech**<sup>®</sup> profiles.



The **combitech**<sup>®</sup>-connect articulated connectors enable you to create infinite angles or adjustable components, substantially increasing the range of uses.

## How it works



- A Cut the profiles to size.
- B Remove the saw burrs.
- C Push in the adapter sleeve to thicken the connector so that this sits firmly in the profile.
- D Now insert the connect connectors and tap them into place. All done!

## An overview of connect connectors



Angle connector 90°



Corner connector 90°



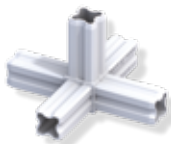
T-connector 90°



Cross connector 90°



Nodal connector 90°  
4 spigots



Nodal connector 90°  
5 spigots



Nodal connector 90°  
6 spigots



Corner connector,  
left, 45°



Corner connector,  
right, 45°



Nodal connector 45°



Flange connector



Articulated flange  
connector

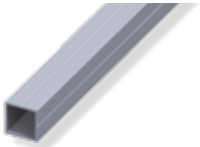


Articulated connector

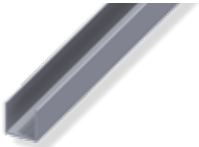


All connectors are available in  
black and white.

## Aluminium system profiles



Square tube



Square U



Square H



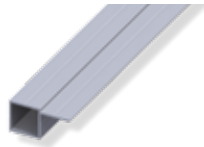
Square tube,  
1 branch



Square U,  
2 branches 180°



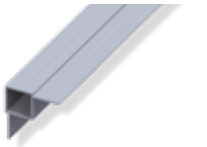
Square tube,  
2 branches 180°



Square tube,  
1 branch offset



Square tube,  
2 branches offset

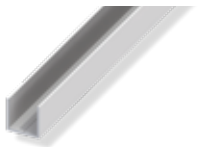


Square tube,  
2 branches inside

## Plastic system profiles



Square tube



Square U

There are a number of matching profiles available for the **combitech**<sup>®</sup>-connect connectors. This allows a variety of applications. The square tube is also available in a 30 cm version, for example for building shelves. This eliminates the need for sawing.

## System accessories



Adapter sleeve



Blind rivet



Threaded plug



Furniture roller



Adjustable foot



End cap



Deburrer

To make your unit more stable, the range includes blind rivets, which can be used to rivet the connector to the profile. The connector can also be glued or screwed to the profile.

The end caps enable you to seal off a tube quickly and neatly. They also cover up any sharp edges that could cause injury.



## Ideas and possibilities



Towel rail



Wine rack



Mobile bathroom unit



Coffee table

# NEWS



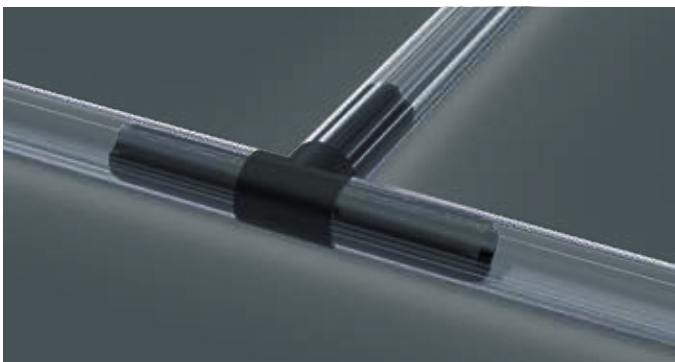
## **combitech**<sup>®</sup> round

### A round solution

The round connectors in 23.5 mm are the new addition to our **combitech**<sup>®</sup> system. These connectors can be used to join our round tubes together. Herewith you can build your own projects for many different solutions.

The range includes aluminium profiles and the matching connectors in 23.5 mm. Practical articulated connectors enable also to create inclinable constructions.

The connectors are available in black and white and they match the **combitech**<sup>®</sup> profiles perfectly which are available in aluminium natural and anodized in color: silver, black and white.



## An overview of round connectors



90° edge connector



90° nodal connector



90° T-connector



90° square connector



Hinge-flange connector



Articulated connector



Spigot connector



90° edge connector



90° nodal connector



90° T-connector



90° square connector



Hinge-flange connector



Articulated connector



Spigot connector

● ○ All connectors are available in black and white.

The aluminium tubes are available in lengths of 0.3m, 1.0m and 2.5m

## Aluminium profiles and accessories



Round tube  
1 branch  
natural



Round tube  
2 branches  
inside, natural



Round tube  
natural



Square tube  
natural



Round tube  
1 branch  
anodized silver



Round tube  
2 branches ins.  
anodized silver



Round tube  
anodized silver



Square tube  
anodized silver



Round tube  
1 branch  
black



Round tube  
2 branches  
inside, black



Round tube  
black



Square tube  
black



Round tube  
1 branch  
white



Round tube  
2 branches  
inside, white



Round tube  
white



Square tube  
white



Black Adapter



White Adapter



Tension  
sleeve

## Notes – product ranges



### Model construction

The connect connectors and profiles are also available in 7.5 mm versions for functional model construction.

### Sheets

A huge range of sheets offers suitable products for many different applications. The **alfer**® sheets are available in several thicknesses and made from several materials.

## Useful application videos

Watch videos of our product and processing tips on YouTube.



Small animal housing with **combitech**®-connect

## Notes – technical diagrams

### Dimensions

The dimensions indicated in this brochure are approximate values and may deviate slightly in either direction.

### Product versions

We reserve the right to make modifications in the interest of technical progress and product improvement.

### Warranty

As this is an abridged brochure, no liability can be accepted for either individual cases or the reproduction of the models shown.

### Colours

The colours depicted may vary slightly from the original products.

### Important notice

The following trademarks (®) are registered to **alfer**® aluminium Gesellschaft mbH, D-79793 Wutöschingen :

<b>alfer</b> ®	EU CH CAN GB
<b>alferpro</b> ®	EU
<b>aluvally</b> ®	EU
<b>clipstech</b> ®	EU MEX
<b>coaxis</b> ®	EU MEX
<b>combitech</b> ®	EU CH MEX
<b>ferroplatan</b> ®	EU
<b>logika</b> ®	EU
<b>verando</b> ®	EU CH
<b>x-star</b> ®	EU

The use of these trademarks is permitted only with the expressed permission of **alfer**® aluminium Gesellschaft mbH, D-79793 Wutöschingen.

## alfer® hardware range



### **combitech® system · basis**

System profiles · metric threaded rods and threaded tubes · system accessories · tool range

### **combitech® system · connect 23.5 mm**

Connect connectors 23.5 mm · system profiles 23.5 mm · system accessories

### **combitech® system · model construction**

Connect connectors 7.5mm · System profiles 7.5 mm · system accessories

**logika®** profiles · metric threaded rods · expanded metal, smooth, embossed and perforated sheets

### **combitech® system · sheets, plates and accessories**

Plastic panels · smooth, embossed, perforated and expanded sheets ·

Prismatech · Multitube · checker plate profiles · accessories

### **Profiles for DIY and professional purposes**

Standard profiles made from aluminium, brass, plastic, steel, stainless steel  
clampline clamping aluminium profiles

### **Steel profiles**





## alfer® building material range



### Tile edgings

Angle, round, quarter-circle and square tile edgings · tile edgings for steps  
LED profiles · joint cover profiles and expansion joint profiles · wet sealing  
profiles **clipstech**® system profiles · balcony angle · mats and accessories

### Floor and room profiles

Cover and joint cover profiles · edging, level balancing, angle edging and  
end profiles · step edging profiles · Edge protecting profiles · Baseboard and  
buckling angles

### Profiles for parquet, laminate and designer floors

**clipstech**®, **clipstech**®-vario, **clipstech**®-plus, **clipstech**®-mini, optifloor  
and renovation System profiles and accessories · cover, level balancing,  
wall edging and edging profiles · Edge profiles, drilled

### verando® Decking boards

**verando**® combines sophisticated design and sustainability.

The weatherproof profiles, mainly made of rice husks, are more durable than  
other wood or wood substitute products, they don't splint, crack or swell.



## alfer® classification system range



### combitech® system · logika®

The logically perforated profile range: **logika®** profiles and **logika®** accessories

### combitech® system · coaxis®

The coaxial system profiles: system profiles, accessories and tools · wall and ceiling hooks

### Storage range

System rails and accessories · profile hooks, clothes hooks and utensils supports · bicycle stands · shelving brackets · Furniture construction profiles and plant trolley





**alfer**<sup>®</sup>  
aluminium

[www.alfer.com](http://www.alfer.com)



**alfer**<sup>®</sup> aluminium  
Gesellschaft mbH  
79793 Wutöschingen  
Germany  
[info.eng@alfer.com](mailto:info.eng@alfer.com)

GB

1122

